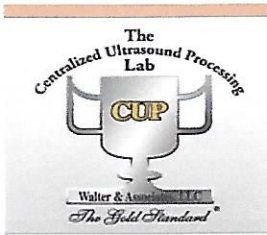


BGF SALE ORDER (12/13/18)

Bulls (Lot - Tag)



- 10 - 201F
- 12 - 711F
- 11 - 830F
- 2 - 14E
- 3 - 653E
- 5 - 370E
- 4 - 815E
- 8 - 470E
- 6 - 78E
- 7 - 512E
- 9 - 366E
- 13 - 1F
- 18 - 371F
- 17 - 990F
- 16 - 253F
- 22 - 370F
- 19 - 70F
- 15 - 833F
- 23 - 82F
- 25 - 466F
- 21 - 755F
- 24 - 280F
- 14 - 990F OUT
- 20 - 76F OUT

Commercial Heifers

- 1A (Simm X Hereford-26F, 66F, 680F)
- 1B (Hereford X Hereford/Angus-359F)
- 1C (Hereford X Angus-205F, 206F, 502F)
- 1D (Hereford X Angus-125F, 532F)
- 1E (Hereford X Angus-46F, 60F)
- 1F (Hereford X Angus-532E)

Bulls**Genomic Enhanced EPD's (December 10, 2018)**

Lot	Tag #	Weight	Scrotal	Age	CE	BW	WW	YW	M	TM	CEM	SC	FAT	REA	MARB
2	14E	1605	38	03/27/17	2.6	1	55.2	91.4	19.4	47	1.2	0.9	0.015	0.59	-0.03
3	653E	1620	39	04/02/17	0.9	4.4	55.2	90.7	23.5	51.1	2.4	0.9	-0.035	0.66	0.08
4	815E	1650	40	03/25/17	4.9	1.7	53.4	88.9	29.2	55.9	5	1.1	-0.015	0.42	0.16
5	370E	1625	40	04/27/17	8.1	2.1	54.7	84.3	24.5	51.9	6	0.8	-0.005	0.5	0.23
6	78E	1620	40	04/03/17	2.8	1.9	55.9	90.1	19.2	47.2	2.4	1.5	-0.005	0.45	0.1
7	512E	1650	37	01/21/17	9	1.3	49.6	75.5	22.7	47.5	4.4	0.7	-0.005	0.44	0.1
8	470E	1735	40	03/22/17	-0.7	5	58.6	96.6	19.5	48.8	1.8	0.5	-0.065	0.52	-0.01
9	366E	1625	37	01/29/17	-1.9	3.5	47	75.8	18.7	42.2	2.9	0.8	0.005	0.71	-0.09
10	201F	1020	32	01/22/18	5.8	2.9	56.6	87.7	31.1	59.4	1.6	0.5	-0.025	0.41	-0.08
11	830F	960	31	02/25/18	-4.1	4.3	55.2	86.8	31.6	59.2	-0.3	0.9	-0.045	0.46	0.13
12	711F	1150	37	01/24/18	-4.3	5.7	68.5	107	22	56.3	3.6	1.6	-0.005	0.48	0.13
13	1F	955	30	01/17/18	1.4	2.5	56.6	91.2	23.2	51.5	5.1	0.6	0.025	0.41	0.16
14	991F	OUT													
15	833F	1025	29	02/21/18	-0.4	3.3	70.3	118	25.4	60.6	5.8	1.2	-0.015	0.77	0.32
16	253F	965	32	01/27/18	8.2	1.1	55.8	88.2	20.2	48.1	10.7	1.1	-0.005	0.53	0.39
17	990F	930	33	02/24/18	3	1.8	54.5	81.9	31.5	58.8	3.7	1	-0.035	0.7	0.1
18	371F	935	32	02/26/18	6.2	1.9	54.8	79.5	31.8	59.2	5.3	1.1	0.015	0.25	0.03
19	70F	925	30	03/05/18	1.5	2.7	50.8	79.7	21.8	47.2	5.1	1	0.005	0.4	0.29
20	76F	OUT													
21	755F	990	30	01/19/18	8.3	1.5	53.7	93.7	27.8	54.7	4.9	0.7	0.005	0.61	0.3
22	370F	935	30	02/19/18	-3.4	4.7	55.7	83.8	25.3	53.2	0.6	0.9	-0.025	0.34	-0.01
23	82F	930	30	02/19/18	-0.4	3.1	50	78.2	32.2	57.2	0.2	0.7	-0.075	0.46	0.03
24	280F	915	31	01/23/18	-2.3	3.5	49.2	80.8	30.8	55.4	-1.8	0.7	-0.035	0.52	0.05
25	466F	930	31	02/11/18	6.2	1.3	42.2	72.6	32.9	54	7.6	1	-0.025	0.39	0.23

Heifers**Lot # Lot Size-Breed Combination (Individuals: Age, Weight)**

- 1A 3-Red Simmental X Hereford (26F: 03/14/18, 780 lbs), (66F: 02/09/18, 718 lbs), (680F: 03/10/18, 762 lbs)
- 1B 1-Hereford X Hereford/Angus (359F: 02/10/18, 836 lbs)
- 1C 3-Hereford X Angus (205F: 02/14/18, 732 lbs), (206F: 02/14/18, 718 lbs), (502F: 02/04/18, 840 lbs)
- 1D 2-Hereford X Angus (125F: 02/09/18, 870 lbs), (532F: 02/11/18, 772 lbs)
- 1E 2-Hereford X Angus (46F: 03/11/18, 682 lbs), (60F: 02/15/18, 740 lbs)
- 1F 1-Hereford X Angus Bred Heifer (532E: 03/7/17, 1445 lbs)

